

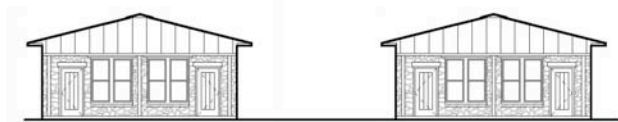
## Ranch Complex

This project is designed as a family gathering place for weekend use. The project consists of integrating 4 structures, a main house, 2 guest houses, and a bunk house, into a picturesque hill top site in Washington County, Texas. The planning and design of this project focused on sensitivity to these site conditions.

The site is enhanced with mature live oak trees, which were a critical parameter of the project design. Buildings were carefully sited to frame views while preserving each live oak. An arborist was included with the design team at the request of the Architect to determine tree health, appropriate pruning, fertilization in preparation for construction, and tree protection during construction.



Main House



Guest Houses



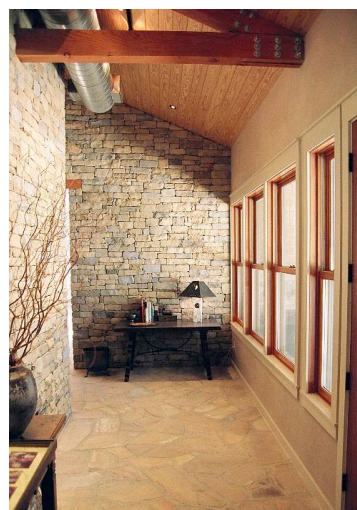
Bunk House

## Ranch Complex

The main house and guest house structures are designed to maintain a low profile in the landscape so as not to dominate the natural beauty of the site.



## Main House



## Main House



The interior spaces of the Main House are open to the extended hilltop views to the south, east and north. Interior materials include stone and wood predominantly for a warm, ranch house aesthetic. Custom light fixtures are incorporated in the Dining Room, Kitchen and Hall in the bedroom wing.

## Guest Houses



The Guest Houses provide a total of four bedrooms with private bathrooms. Rooms are designed to be cozy yet efficient sleeping quarters which overlook the pool and central lawn. The Guest Houses are paired, sited between the Main House and Bunk House.



## Bunk House

The Bunk House is a more playful structure for kids. The structure reflects traditional ranch house materials and detailing, while incorporating all modern amenities.

